



USAFA CLASS RING

Wear It With Pride!



UNITED STATES
AIR FORCE ACADEMY

2017 Class Ring Catalog



The United States Air Force Academy Class of 2017



CLASS LETTER

Buds,

We are on the cusp of one of the most recognizable milestones in our Air Force Academy careers. We have fought through a myriad of challenges and here we stand. You are one of the 1032 cadets to make it this far. Nearly 150 of our classmates are no longer with us for whatever reason but you can look yourself in the mirror and know that you have earned a place in the class of 2017.

Time will soon relegate our years at the academy to a blur of important and unforgettable moments. Included in those moments will be the milestones that we all accomplished together: I-Day, Acceptance Day, Recognition, Commitment Dinner, and now Ring Dance. We look forward to Hundreds weekend and eventually Graduation. Then we enter into the Operation Air Force, where we will have real life effect on the mission of the United States Armed Forces. With all of that ahead of us, I urge you to use the rings we will all get to remind you of who you are and where you came from. We are a select group, but we must continue to develop and strive for excellence. The rank on their lapel or the ring on their finger does not define an officer. As officers, our abilities to treat others with respect, train and nurture our subordinates, and get the mission done will define us. These are certainly demanding and difficult tasks but we are being trained every day to accomplish them. I have no doubt in my mind that when we throw our parade caps in the air, we will be able to look upon these tasks as challenges we are both ready and willing to take on.

Our rings will act as a symbol linking us back to the institution that is the United States Air Force Academy. Where ever we go and whatever we do, we will carry an emblem of this wonderful place. However, I urge you to never forget that we are the Air Force Academy incarnate. The cadets breathe life into the hollow structures. Without us, USAFA would be a lot of right angles and metal. When we receive our rings, we should all wear them proudly and confidently, representing the Buds of 2017, the Air Force as a whole, and most importantly ourselves. Earn your ring every day by being the leader you were destined to be.

James William Hanley
Class President, Class of 2017



RING ORDERING INFORMATION

Ring Brief :

1900 Hours

Tuesday, 8 December, 2015

Stone Show Times & Dates:

1000 to 1700 Hours

Wednesday, 9 December, 2015

Thursday, 10 December, 2015

Order Times & Dates:

1000 to 1700 Hours

Tuesday, 12 January, 2016

Wednesday, 13 January, 2016

Thursday, 14 January, 2016

Location:

USAFA Cadet Library
— Main Lobby

The United States Air Force Academy

Class Crest: The class crest is one of the most treasured representations of class unity and class pride. Until graduation, we, the Class of 2017, will wear the ring with the class crest facing inward, closest to our hearts. After graduation, the ring is turned so that the Academy Crest is closest to the heart of an officer ready and willing to protect and defend with the training we have received. This is a unique tradition in which all graduates of the Academy are forever united. Through the blood and the sweat, the triumphs and the failures, we have become brothers and sisters for life.

2017 USAFA Ring — The Academy Crest is placed on the left side of the ring. The bezel surrounds a stone or inset plus the words “United States Air Force Academy.” These are encircled by a chain of 59 links to represent the first graduating class and the bond each class shares with the preceding ones. These elements have remained constant throughout the years and serve as yet another bond all classes share together.

The Class of 2017 crest decorates the right side of the ring. It is composed of both compulsory and optional elements that together represent our Academy experience.

Ring Elements

1. Class Year: 2017 is clearly represented by the number 17, crowning the top of the crest.

2. American Flag: Reminds us of what we are defending, it is raised above all else to symbolize service before self.

3. USAFA Chapel Spires: As the most recognizable sight of the Academy, we wanted to represent our class with the spires of the chapel. The 17 high reaching spires parallel the great accomplishments that our class strives for and will attain in the future.

4. Polaris: Embedded within the middle spire, the Polaris is the guiding star which reminds us to strive towards excellence and integrity.

5. Saber: In modern times, the saber has become the symbol of leadership.

6. Eagle: The Eagle is symbolic of freedom and our Country’s might. It is attacking and takes on any challenge without a hint of fear.

7. Class Motto: Aestima Metue Omnes Nullos- Respect All Fear None. Our class motto, which was given to us by the class of 2014, means that we will carry respect for each other as well as for our adversaries, while at the same time confronting our enemies rather than fearing them.

8. Class Number: Our class number in both roman numerals LIX and in lightning bolts represents 2017 as the 59th graduating class of the United States Air Force Academy.

9. F-100, F-4, and F-35: The planes are flying in a heritage formation that goes from the older generation F-100 fighter to the new F-35, symbolizing the evolution of the Air Force and the passing of the torch from old to new.

10. GD: The initials of Colonel Day are etched into the F-100, Colonel Day’s aircraft during Vietnam. On his 65th mission into North Vietnam, Col. Day was forced to eject without a parachute and survived only to later be captured as a prisoner of war.

11. Medal of Honor: Our class exemplar, Colonel George E. “Bud” Day, is remembered in our crest through the Medal of Honor. Colonel Day is the most highly decorated officer in the modern military with over 78 awards as well as the Medal of Honor. We represent our pride in him through his highest decoration.





BASIC INFORMATION – RING STYLES

Metal Quality

18K White Gold 14K White Gold 10K White Gold Lustrium

Your ring is a valuable recognition of your accomplishments, and therefore the Academy designates 14K white gold in the official Academy specifications. 14K is also the jeweler’s standard in this country. For those cadets who desire more gold in their ring, 18K white gold is available. For those wishing a more economical gold ring, 10K white gold is available. Lustrium, a non-precious alloy made of nickel, chromium and beryllium, is also available.

Large: Official style for males

Medium: Official style for females

Small: Alternate style for females



2017 USAFA PRICING INFORMATION

Styles and Quality

The official ring is priced to include your choice of any synthetic birthstone or black onyx stone, traditional antique finish, and one line of engraving inside a solid closed back. All other stones and options are an addition to the basic ring prices listed below.

Style	18K Gold	14K Gold	10K Gold	Lustrium
Large	\$	\$	\$	\$
Medium	\$	\$	\$	\$
Small	\$	\$	\$	\$

RING SETTINGS & STONE OPTIONS

Tube sets

A diamond or genuine stone can be added to your smooth top birthstone by preparing the stone to receive a square tube set. Actual samples will be on display when you order your ring.

Maximum sizes of stones that can be tube set into birthstones are as follows:

	Square
Large Ring	1/2 carat
Medium Ring	1/7 carat
Small Ring	1/20 carat



White Gold Tops

These beautiful and elegant white gold tops are available in a variety of designs. The tops can be set with a solitaire diamond or genuine stone to enhance the beauty of your ring. Actual samples will be on display when you order your ring. Maximum sizes of stones that can be set in white gold tops are as follows:



	Laurel	Thunderbolt	Eclipse	Rosette	Goldstone	Star
Large	3/4 carat	3/4 carat	1/2 carat	1/3 carat	1 carat	3/4 carat
Medium	1/4 carat	1/4 carat	1/4 carat	1/4 carat	3/4 carat	1/4 carat
Small	1/5 carat	1/10 carat	1/10 carat	1/10 carat	1/3 carat	1/5 carat

Tube Set & Gold Top Stone Pricing

Stones					Stones				
Ct. Size	Diamond (JG-01)	Diamond (JG-03)	Genuine Ruby	Genuine Emerald	Ct. Size	Genuine Blue Sapphire	Cubic Zirconia	Birth Stones	Cornflower Blue Star Sapphire
1	\$	\$	\$	\$	1	\$	\$	\$	—
3/4	\$	\$	\$	\$	3/4	\$	\$	\$	—
1/2	\$	\$	\$	\$	1/2	\$	\$	\$	—
1/3	\$	\$	\$	\$	1/3	\$	\$	\$	—
1/4	\$	\$	\$	\$	1/4	\$	\$	\$	\$
1/5	\$	\$	\$	\$	1/5	\$	\$	\$	—
1/7	\$	\$	\$	\$	1/7	\$	\$	\$	—
1/10	\$	\$	\$	\$	1/10	\$	\$	\$	—
1/20	\$	\$	\$	\$	1/20	\$	\$	\$	—

POPULAR DESIGNS

The rings described below have been the most popular designs with cadets for many years.

THE POLARIS PACKAGE

14k White Gold
Antique Finish
Diamond Stone Dividers
Cluster Top: Cornflower Blue Star Sapphire
and Diamonds

Sculptured Palmside

Large \$
Medium \$
Small \$



THE FALCON PACKAGE

14k White Gold
Antique Finish
Diamond Stone Dividers
Cornflower Blue Star Sapphire
Sculptured Palmside

Large \$
Medium \$
Small \$



THE SABER PACKAGE

10k White Gold
Antique Finish
Cubic Zirconia Stone Dividers
Fire Blue Spinel Facet Stone
Sculptured Palmside

Large \$
Medium \$
Small \$



CLUSTER SETTINGS WITH CENTER STONES

Jostens can upgrade your official ring with a variety of cluster settings. The cluster tops are settings of a center birthstone, precious stone or diamond, surrounded by smaller diamonds, rubies, sapphires or emeralds. Maximum size for the center stone and the points (weight) of surrounding stones varies by ring style and type of stones. Samples of these options will be on display when you place your ring order.

The following prices are applicable during the class ring ordering period. All diamonds listed are H/I-J (JG-03) quality and all Star Sapphires are synthetic. Prices listed are for stone clusters only and must be added to base ring price.



Large Ring Cluster Settings

Cluster 8-4 pt Stones (center stone 8 x 6 oval)

Center Stone	8-4 pt Stones	Price
Birthstone	Diamonds	\$
Birthstone	Cubic Zirconias	\$
Star Sapphire	Diamonds	\$
Star Sapphire	Cubic Zirconias	\$
Cubic Zirconia	Birthstones	\$
Cubic Zirconia	Cubic Zirconias	\$



Cluster 10-4 pt stones (center stone 8 x 6 oval)

Center Stone	10-4 pt Stones	Price
Birthstone	Diamonds	\$
Birthstone	Cubic Zirconias	\$
Star Sapphire	Diamonds	\$
Star Sapphire	Cubic Zirconias	\$
Cubic Zirconia	Birthstones	\$
Cubic Zirconia	Cubic Zirconias	\$



Cluster 12-3 pt stones (center stone 7 x 5 oval)

Center Stone	12-3 pt Stones	Price
Birthstone	Diamonds	\$
Birthstone	Cubic Zirconias	\$
Star Sapphire	Diamonds	\$
Star Sapphire	Cubic Zirconias	\$
Cubic Zirconia	Birthstones	\$
Cubic Zirconia	Cubic Zirconias	\$



Medium Ring Cluster Settings

Cluster 8-2 pt stones (center stone 7 x 5 oval)

Center Stone	8-2 pt Stones	Price
Birthstone	Diamonds	\$
Birthstone	Cubic Zirconias	\$
Star Sapphire	Diamonds	\$
Star Sapphire	Cubic Zirconias	\$
Cubic Zirconia	Birthstones	\$
Cubic Zirconia	Cubic Zirconias	\$



Cluster 10-1.5 pt stones (center stone 7 x 5 oval)

Center Stone	10-1.5 pt Stones	Price
Birthstone	Diamonds	\$
Birthstone	Cubic Zirconias	\$
Star Sapphire	Diamonds	\$
Star Sapphire	Cubic Zirconias	\$
Cubic Zirconia	Birthstones	\$
Cubic Zirconia	Cubic Zirconias	\$



Cluster 12-2pt stones (center stone 5 x 3 oval)

Center Stone	12-2 pt Stones	Price
Birthstone	Diamonds	\$
Birthstone	Cubic Zirconias	\$
Star Sapphire	Diamonds	\$
Star Sapphire	Cubic Zirconias	\$
Cubic Zirconia	Birthstones	\$
Cubic Zirconia	Cubic Zirconias	\$



Small Ring Cluster Settings

Cluster 8-1pt stones (Center stone 5 x 3 oval)

Center Stone	8-1 pt Stones	Price
Birthstone	Diamonds	\$
Birthstone	Cubic Zirconias	\$
Star Sapphire	Diamonds	\$
Star Sapphire	Cubic Zirconias	\$
Cubic Zirconia	Birthstones	\$
Cubic Zirconia	Cubic Zirconias	\$



ADDITIONAL RING OPTIONS

Genuine Stone Bezel Dividers

To enhance the beauty of your stone, cluster top or white gold top, we offer the option of setting diamonds or genuine stones in your ring bezel. Only full-cut genuine stones are used. Samples will be on display when you place your ring order. The cost for this option is:

Style	Stone Pts	Diamonds	Sapphires	Rubies	Emeralds	Cubic Zirconia/Birthstone
Large	2-3 pts	\$	\$	\$	\$	\$
Medium	2-2 pts	\$	\$	\$	\$	\$
Small	2-1 pts	\$	\$	\$	\$	\$



Star Divider
(Standard)

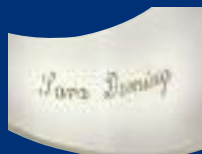


Stone Divider

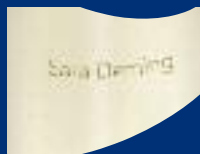
Engraving

The amount of engraving in your ring is limited by the space available. Your ring may have up to 3 lines of engraving. Each line can have up to 34 characters including spaces. The more characters that you have in your engraving the smaller the engraving will be inside your ring.

- First line of engraving is free.
- A second and third line of engraving is typically used to include a motto or phrase to further personalize your ring. There is an additional charge of \$ for each additional line. Engraving is available in script or block letters.



Script



Block



Squadron Insignia - Example

Ring Finish

You will receive the traditional dark antique finish, which enhances the detail and design of your ring. Jostens also offers a satin (natural) finish. Samples of available finishes will be on display when you place your order.

The additional cost for Satin finish is \$.



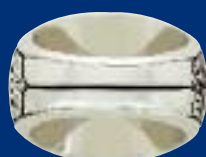
Dark Antique



Satin



Sculptured



Standard

Sculptured Palmside

With this elegant touch of extra craftsmanship, a textured pattern is added by hand to the palmside of your ring. In addition to enhancing the custom beauty of your ring, this feature will camouflage nicks and scratches that result from normal wear and will help to retain the palmside beauty of your ring. The additional cost for a sculptured palmside is \$.

Pave Tops

The New Jostens Pave "Waterfall" top, where Gold Tops meet Cluster Tops. A gold top set with up to 80 diamonds or cubic zirconia's that surround a center stone on top. Choose from our large selection of Gemstones or synthetic stones to top off your Pave setting.

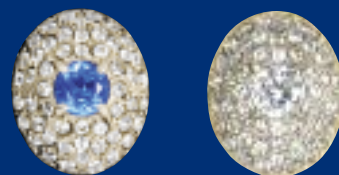


Pave Top for Large Rings

1/5 ct center stone surrounded by 80 - 1/2 pt. stones

Center Stone	Surrounded by:	Price
Synthetic Stone	Diamonds	\$
Cubic Zirconia	Cubic Zirconia	\$
Synthetic Stone	Cubic Zirconias	\$

Note: Genuine stones are also available in the center of the Pave Top. Please ask one of the Jostens representatives for pricing.



Pave Top for Medium Rings

1/7 ct center stone surrounded by 52 - 1/2 pt. stones

Center Stone	Surrounded by:	Price
Synthetic Stone	Diamonds	\$
Cubic Zirconia	Cubic Zirconia	\$
Synthetic Stone	Cubic Zirconias	\$



Pave Top for Small Rings

1/10ct center stone surrounded by 32 - 1/2 pt. stones

Center Stone	Surrounded by:	Price
Synthetic Stone	Diamonds	\$
Cubic Zirconia	Cubic Zirconia	\$
Synthetic Stone	Cubic Zirconias	\$

STONES AND CUTS

You have your choice of the following synthetic birthstones. Smooth, Facet or any of the Onyx stones are included in the base price of your ring. If you choose a Sunburst or India cut stone there is an additional charge.

Smooth Synthetic Birthstone	No Charge
Facet Synthetic Birthstone	No Charge
Black, Blue, Green and Sardonyx genuine stones	No Charge
Sunburst Birthstone	\$
India Cut Birthstone	\$
Mother of Pearl	\$



BIRTHSTONES Smooth and faceted birthstones. Jostens simulated birthstones are “ideal cut” to maximize the dazzle and brilliance of the stone. As light enters the stone, it freely refracts from facet to facet, for a radiant display of color.



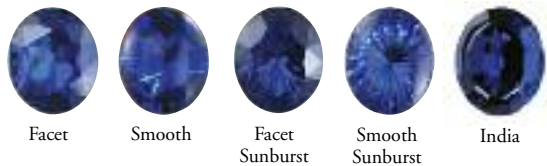
INDIA CUT India-cut stones offer 40% more hand-cut facets than standard facet stones, to bring out their true color and brightness.



SUNBURST Add extra brilliance to your stone with this special feature on the back of the simulated birthstone of your choice. Smooth or Facet top available.



Also available:
Dark Blue Spinel



RING SETTINGS & STONE OPTIONS

Ring Settings & Stone Options

The standard official ring includes your choice of a smooth or faceted synthetic birthstone, or black onyx stone, traditional antique finish, one line of engraving and a solid closed back.

Synthetic Birthstones

These are man-made stones with the same molecular structure and properties as a genuine stone. They have a hardness factor on the Mohs scale of 7 or 8. Using this same scale, a window glass is a 3 and a diamond is a 10.

The options include India cut and sunburst stones. A full color chart of stones and stone options is included in this brochure. Actual stones and options will be on display when you order your ring.

Synthetic Star Sapphire

Next to the diamond this distinctive stone is the hardest and most chip resistant. The star sapphire displays a clear, sharp Polaris, which is also symbolic of the Academy. The cornflower blue star sapphire can be purchased with either a high dome which is traditional or a low dome. These stones will be on display during ring ordering.

Synthetic Star Sapphire Colors

The additional charges for Star Sapphires are:

Large \$ Medium \$ Small \$



Claret Red



Cornflower Blue



ACCESSORIES

Crest Pin Jewelry

Crest pin and accessory jewelry are exact replicas of your class crest. These custom pieces are available in 10K and 14K white gold. You will receive the traditional dark antique finish, which enhances the detail and design of your class crest. Jostens also offers satin (natural) for an additional cost of \$10. Your class crest is available in the form of crest pin, cuff links, tie tack, tie bar, pendant, and charm.

Crest jewelry is a great gift anytime but it's especially appropriate for birthday and holiday gifts for parents, family and special friends. *amples will be available during the ordering event.*



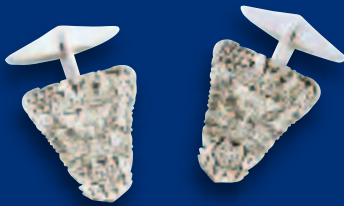
	10K	14K
Tie Bar	\$	\$225



	10K	14K
Charm	\$	\$



	10K	14K
Pendant	\$	\$



	10K	14K
Cuff Links	\$	\$



	10K	14K
Tie Tack	\$	\$



	10K	14K
Crest Pin	\$	\$

Ring Dance Charm

The Ring Dance is one of the highlights of your career at the Academy. Jostens has designed this charm to commemorate this special event. The charm is designed to be worn on a necklace or bracelet and is a representation of your Academy ring. It is a perfect gift for family members, friends and your Ring Dance companion.

The price is \$.



Jumbo Replica Ring/Paperweight

No desk is complete without this enlarged replica of the Air Force 2017 class ring. One side of the ring depicts the USAFA crest while the other side proudly displays the USAFA 2017 class crest.

The top of the ring the AF with the lightning bolts with United States Air Force Academy spelled out around the bezel.

Approximate size is 2" x 2 1/2".

The cost is \$.



Walnut Ring Box

A genuine walnut ring case is available to store your ring when it is not being worn. The cover of the box has the Class of 2017 crest engraved on it. The crest is laser cut to ensure an exact reproduction. The walnut ring box will be available at the time you order your ring.

The cost is \$.



Cluster Settings

Jostens can upgrade your official ring with a variety of cluster settings. The following prices are applicable during the class ring ordering period. All diamonds listed are H/I-J (JG-03) quality and all Star Sapphires are synthetic. Prices listed are for stone clusters only and must be added to base ring price.

Diamond Quality

JG 01 Grade		JG 03 Grade	
Color	White H-I	Color	White H-IJ
Clarity	VS 2 GIA Classification	Clarity	SI 2 GIA Classification
	No black inclusions		No black inclusions
	No chips or feathers open to surface		No chips or feathers open to surface
	No polish lines		Only very minor polish lines
	Clear - no watery, grainy material		Clear - no watery, grainy material
Proportion	Very good or better	Proportion	Good or better
	No fisheyes or dark centers		No fisheyes or dark centers



Color

The most desirable diamonds are colorless. A totally colorless diamond allows light to pass through it and be dispersed as rainbows of color.

D	E	F	G	H	I	J	K	L	M	N	O	P	Q	R	S	T	U	V	W	X	Y	Z
COLORLESS	NEAR COLORLESS	FAINT	VERY LIGHT YELLOW																			

RING SIZING

To properly size your finger, a ring sizer should fit snugly over the knuckle of the finger on which you will wear your ring. The ring is normally worn on the ring finger of either hand. Also, be aware that your left and right hand can vary in ring size. Full and half sizes are available. A Jostens representative will assist you at the time you place your order.

SERVICE - Jostens Service

A Jostens representative will be at the Academy Library periodically during the academic year to answer questions and to provide assistance for any service or warranty work that may be required. This service begins in August and continues until graduation. The exact schedule will be announced.

LOSS PROTECTION

Jostens will provide each cadet with ONE class ring replacement for a fee of \$150.00. This will be in effect for one year following receipt of the ring. This replacement includes genuine stones purchased from Jostens. It does not cover any cadet supplied stones.

Exceptions

If the Academy has started disenrollment procedures on a cadet, this insurance becomes void. A cadet who loses his/her ring after initial disenrollment procedures have started will not receive a ring replacement, nor will they be eligible for a refund of any portion of their ring.





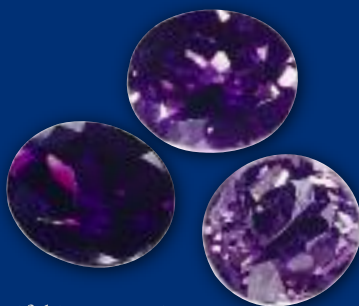
UNITED STATES AIR FORCE ACADEMY EXCLUSIVE GEMSTONES

Amethyst

Light, Medium, & Dark purple
Hardness: 7

Appearance: Transparent light pinkish purple to a dark reddish or bluish purple

Characteristics: Color zoning, fingerprints, and crystals. Amethyst, with its rich purple color, symbolizes royalty and aristocracy. Since it is plentiful in nature, it represents an incredible value for those who appreciate its elegant color.



Amethyst Pricing:

	Light	Medium	Dark
--	-------	--------	------

Large (12x10mm)
Medium (10x8)
Small (8x6)
Large Cluster (8x6) 8 & 10 stone
Large Cluster (7x5) 12 stone
Med. Cluster (7x5) 8 & 10 stone
Med. Cluster (5x3) 12 stone
Small Cluster (5x3) 8 stone



Aquamarine: Light, Medium & Dark
Hardness: 7½-8

Appearance: Light to medium blue to bluish-green
Characteristics: Liquid-filled inclusions, fingerprints, hollow or gas filled tubes

Aquamarine has long symbolized the sea. It remains the favorite of those who appreciate the rarity of this spectacular blue gemstone.



Aquamarine Pricing:

	Light	Medium	Dark
--	-------	--------	------

Large (12x10mm)
Medium (10x8)
Small (8x6)
Large Cluster (8x6) 8 & 10 stone
Large Cluster (7x5) 12 stone
Med. Cluster (7x5) 8 & 10 stone
Med. Cluster (5x3) 12 stone
Small Cluster (5x3) 8 stone



Garnet

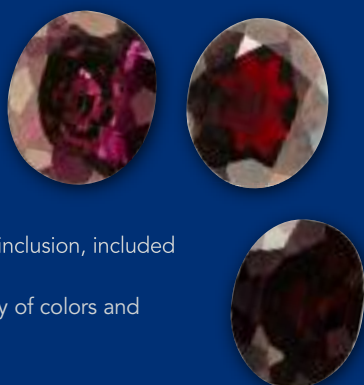
Color Offering: Light, Medium, and Dark

Appearance: Light to dark reddish orange to purplish red

Hardness: 7 to 7½

Characteristics: Coarse needle-like inclusion, included crystal of low relief

Garnet is available in a stunning array of colors and price ranges to fit anyone's taste.



Garnet Pricing:

	Far East Dark	Garnet Medium	Rhodalite Light
--	---------------	---------------	-----------------

Large (12x10mm)
Medium (10x8)
Small (8x6)
Large Cluster (8x6) 8 & 10 stone
Large Cluster (7x5) 12 stone
Med. Cluster (7x5) 8 & 10 stone
Med. Cluster (5x3) 12 stone
Small Cluster (5x3) 8 stone

Blue Topaz

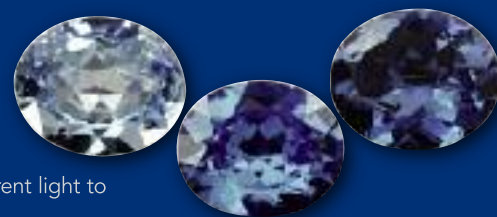
Color Offering: Light (Sky), Medium (Swiss), and Dark

Appearance: Transparent light to medium blue

Hardness: 8

Characteristics: 2-phase and 3-phase inclusions

This popular blue gem symbolizes both the sky and sea. It is an affordable, fashionable stone, sure to please any taste.



Blue Topaz Pricing:

	Light	Medium	Dark
--	-------	--------	------

Large (12x10mm)
Medium (10x8)
Small (8x6)
Large Cluster (8x6) 8 & 10 stone
Large Cluster (7x5) 12 stone
Med. Cluster (7x5) 8 & 10 stone
Med. Cluster (5x3) 12 stone
Small Cluster (5x3) 8 stone

Genuine Black Star Sapphire

Appearance: Light to dark green/greyish black with asterism, hexagonal lines

Hardness: 9

Characteristics: Fine needles-like rutile "silk", hexagonal growth lines, internal fractures, color zoning, small "fissures" and scratches around the side of the stone

A popular choice at the academy, these dark six-rayed stars are symbolic of the Polaris, or Guiding Light.



Genuine Black Star Sapphire Pricing:

Large (12x10)	Medium (10x8)	Small (8x6)	Large Cluster (8x6) 8 & 10 stone	Large Cluster (7x5) 12 stone	Med. Cluster (7x5) 8 & 10 stone	Med. Cluster (5x3) 12 stone	Small Cluster (5x3) 8 stone

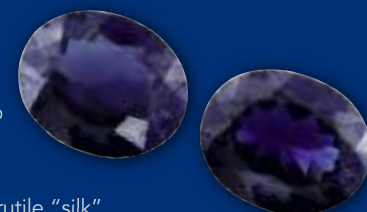
Genuine Blue Sapphire

Appearance: Light to dark violet to greenish blue

Hardness: 9

Characteristics: Fine needles-like rutile "silk", fingerprint inclusions, hexagonal growth lines, and color zones.

Sapphire is a regal gem and was worn by kings as a powerful defense from harm. This favorite dark blue hue combined with the durability of sapphire makes a gemstone that will endure for generations to come.



Blue Sapphire Pricing:

Large (12x10mm)
Medium (10x8)
Small (8x6)
Large Cluster (8x6) 8 & 10 stone
Large Cluster (7x5) 12 stone
Med. Cluster (7x5) 8 & 10 stone
Med. Cluster (5x3) 12 stone
Small Cluster (5x3) 8 stone

UNITED STATES AIR FORCE ACADEMY EXCLUSIVE GEMSTONES

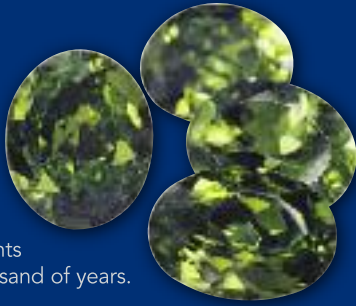
Peridot

Appearance: Light to dark yellowish to brownish green

Hardness: 6½

Characteristics: Disk-like liquid and gas inclusions, "lily pads", dark crystals

Peridot's golden green color represents the sun and has been prized for thousand of years.



Peridot Pricing:

Large (12x10)	Medium (10x8)	Small (8x6)	Large Cluster (8x6) 8&10 stone	Large Cluster (7x5) 12 stone	Med. Cluster (7x5) 8&10 stone	Med. Cluster (5x3) 12 stone	Small Cluster (5x3) 8 stone
N/A	N/A	N/A	N/A	N/A	N/A	N/A	N/A

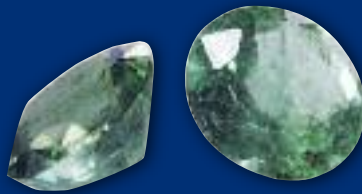
Emerald

Appearance: Light to very dark green to bluish green

Hardness: 7½ to 8

Characteristics: Almost always found with inclusions, such as calcite, pyrite and or mica

Emeralds have been the most treasured green gemstone for centuries. Rare and expensive, emeralds are available only in smaller sizes in academy class rings.



Emerald Pricing:

Large (12x10)	Medium (10x8)	Small (8x6)	Large Cluster (8x6) 8&10 stone	Large Cluster (7x5) 12 stone	Med. Cluster (7x5) 8&10 stone	Med. Cluster (5x3) 12 stone	Small Cluster (5x3) 8 stone
N/A	N/A	N/A	N/A	N/A	N/A	N/A	N/A

Genuine Ruby

Appearance: Light to dark orange to purplish red

Hardness: 9

Characteristics: Fine needle-like rutile "silk", fingerprint inclusions, and color zones.

Ruby has always been the pinnacle of the gemstone family. Rare, sought after, and vibrant, it is desired like no other gemstone.



Ruby Pricing:

Large (12x10)	Medium (10x8)	Small (8x6)	Large Cluster (8x6) 8&10 stone	Large Cluster (7x5) 12 stone	Med. Cluster (7x5) 8&10 stone	Med. Cluster (5x3) 12 stone	Small Cluster (5x3) 8 stone
N/A	N/A	N/A	N/A	N/A	N/A	N/A	N/A

Green Tourmaline

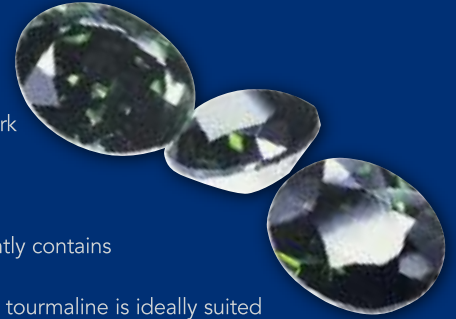
Color Offering: Green

Appearance: Light to dark yellowish green to bluish green

Hardness: 7 to 7½

Characteristics: Frequently contains thread-like inclusions

Available and affordable, tourmaline is ideally suited to virtually anyone's taste.



Green Tourmaline Pricing:

Large (12x10)	Medium (10x8)	Small (8x6)	Large Cluster (8x6) 8&10 stone	Large Cluster (7x5) 12 stone	Med. Cluster (7x5) 8&10 stone	Med. Cluster (5x3) 12 stone	Small Cluster (5x3) 8 stone
N/A	N/A	N/A	N/A	N/A	N/A	N/A	N/A

Citrine Topaz

Color Offering: Light, and Dark

Appearance: Light yellow to golden brown

Hardness: 7

Characteristics: Color zoning, fingerprints and crystals

The yellow hues of citrine are striking and symbolic of the sun, health and vitality. Since it is plentiful in nature, it is an incredible value for the person who appreciates its color.



Citrine Topaz Pricing:

	Light	Dark
Large (12x10mm)	N/A	N/A
Medium (10x8)	N/A	N/A
Small (8x6)	N/A	N/A
Large Cluster (8x6)	8 & 10 stone	N/A
Large Cluster (7x5)	12 stone	N/A
Med. Cluster (7x5)	8 & 10 stone	N/A
Med. Cluster (5x3)	12 stone	N/A
Small Cluster (5x3)	8 stone	N/A

Opal

Color Offering: White

Appearance: Transparent to opaque stones with "play of color"

Hardness: 5 to 6½

Mysterious opals contain the wonders of the skies—sparkling rainbows, fireworks and lightning—shifting and moving in their depths.



Opal Pricing:

Large (12x10)	Medium (10x8)	Small (8x6)	Large Cluster (8x6) 8&10 stone	Large Cluster (7x5) 12 stone	Med. Cluster (7x5) 8&10 stone	Med. Cluster (5x3) 12 stone	Small Cluster (5x3) 8 stone
N/A	N/A	N/A	N/A	N/A	N/A	N/A	N/A

UNITED STATES AIR FORCE ACADEMY EXCLUSIVE GEMSTONES

Meteorite

Color Offering: Iron w/ Widmanstatten Patterns

Appearance: Varies from stone to stone **Hardness:** 9

Characteristics:

The Widmanstatten Patterns show us that this stone is "Extra Terrestrial" – from outer space. These stones come from the Gibeon meteorite that is estimated to be 4 billion years old. This meteorite fell to earth over 10,000 years ago in Africa. It is made up of 91.8% Iron and 7.7% Nickel and also contains small amounts of Cobalt, Phosphorus, Iridium, Gallium, and Germanium. Polished with a dilute nitric acid to bring out the Widmanstatten Patterns that are unique in each meteorite.

Meteorite Pricing:

Large (12x10)	Medium (10x8)	Small (8x6)	Large Cluster (8x6)	Large Cluster (7x5)	Med. Cluster (7x5)	Med. Cluster (5x3)	Small Cluster (5x3)
			8&10 stone	12 stone	8&10 stone	12 stone	8 stone
						NA	NA

Iolite

Appearance: Color varies from sapphire blue to blue violet to yellowish gray to light blue as the light angle changes

Hardness: 7 - 7.5

Characteristics: Cordierite (mineralogy) - gem variety iolite is a magnesium iron aluminium cyclosilicate.

The name iolite comes from the Greek word for violet. It has also been called "water-sapphire" and "vikings' compass", because of it's reputed ability to determine the direction of the sun on overcast days.

Iolite Pricing:

Large (12x10)	Medium (10x8)	Small (8x6)	Large Cluster (8x6)	Large Cluster (7x5)	Med. Cluster (7x5)	Med. Cluster (5x3)	Small Cluster (5x3)
			8&10 stone	12 stone	8&10 stone	12 stone	8 stone

DIAMONDS

COLOR

THE MOST DESIRABLE DIAMONDS ARE COLORLESS. A TOTALLY COLORLESS DIAMOND ALLOWS LIGHT TO PASS THROUGH IT AND BE DISPERSED AS RAINBOWS OF COLOR.

D	E	F	G	H	I	J	K	L	M	N	O	P	Q	R	S	T	U	V	W	X	Y	Z
COLORLESS	NEAR COLORLESS	FAINT	VERY LIGHT YELLOW																			

Pink Tourmaline

Color Offering: Pink

Appearance: Light to Dark Pink

Hardness: 7 - 7.5

Characteristics: Frequently contains thread like inclusions.

Available and affordable, tourmaline is ideally suited to virtually anyone's taste.

Pink Tourmaline Pricing:

Large (12x10)	Medium (10x8)	Small (8x6)	Large Cluster (8x6)	Large Cluster (7x5)	Med. Cluster (7x5)	Med. Cluster (5x3)	Small Cluster (5x3)
			8&10 stone	12 stone	8&10 stone	12 stone	8 stone

Green Quartz

Color Offering: Light Green

Appearance: Light "Smokey" Green

Hardness: 7

Characteristics: Green quartz (Prasiolite) is a rare Brazilian stone that has similar characteristics to Amethyst and Citrine. It is often incorrectly referred to as green amethyst.

Green Quartz Pricing:

Large (12x10)	Medium (10x8)	Small (8x6)	Large Cluster (8x6)	Large Cluster (7x5)	Med. Cluster (7x5)	Med. Cluster (5x3)	Small Cluster (5x3)
			8&10 stone	12 stone	8&10 stone	12 stone	8 stone

Tanzanite

Color Offering: Blue violet

Appearance: Light violet

Hardness: 6½ to 7

Characteristics: Multifaceted prisms

Named for the East African state of Tanzania, the color varies from ultramarine to sapphire blue and appears violet.

Tanzanite Pricing:

Large (12x10)	Medium (10x8)	Small (8x6)	Large Cluster (8x6)	Large Cluster (7x5)	Med. Cluster (7x5)	Med. Cluster (5x3)	Small Cluster (5x3)
			8&10 stone	12 stone	8&10 stone	12 stone	8 stone

DIAMOND QUALITY

JG 01 GRADE	COLOR	WHITE H-I
	CLARITY	VS 2 GIA CLASSIFICATION NO BLACK INCLUSIONS NO CHIPS OR FEATHERS OPEN TO SURFACE NO POLISH LINES CLEAR - NO WATERY, GRAINY MATERIAL
JG 03 GRADE	PROPORTION	VERY GOOD OR BETTER NO FISHEYES OR DARK CENTERS
	COLOR	WHITE IK
JG 03 GRADE	CLARITY	SI GIA CLASSIFICATION NO BLACK INCLUSIONS NO CHIPS OR FEATHERS OPEN TO SURFACE ONLY VERY MINOR POLISH LINES CLEAR - NO WATERY, GRAINY MATERIAL
	PROPORTION	GOOD OR BETTER NO FISHEYES OR DARK CENTERS

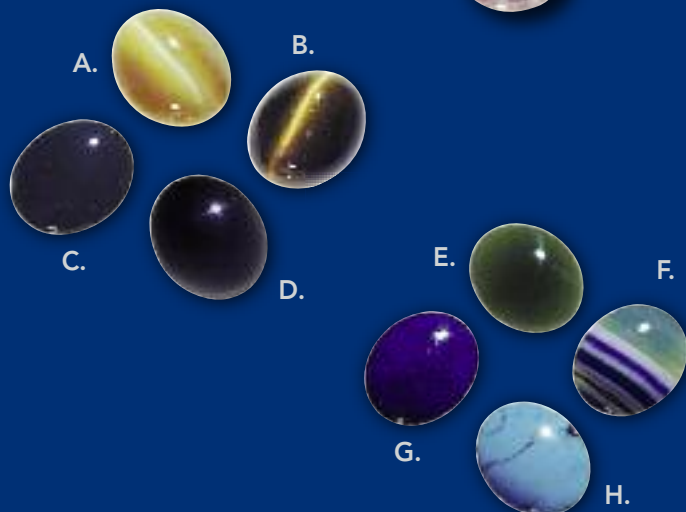
UNITED STATES AIR FORCE ACADEMY EXCLUSIVE GEMSTONES

SEMI-PRECIOUS STONES

Granite

Hardness: 5½

Jostens has cut and polished granite, provided by the Academy, into stones for your class ring.



A. Cats Eye

Appearance: A stone with fibrous structure

Hardness: 7 — Characteristics: Irregular fibrous structure

B. Brown Tiger Eye

Appearance: A stone with fibrous structure

Hardness: 7 — Characteristics: Irregular fibrous structure

C. Bloodstone

Appearance: Dark green with red to brown spots

Hardness: 6½ to 7 — Characteristics: Semi-transparent to opaque

D. Hematite

Appearance: Silver black with metallic luster

Hardness: 6½ — Characteristics: Semi-transparent to opaque

E. Jade

Appearance: Translucent to opaque

Hardness: 6 to 6½ — Characteristics: Dark inclusions and streaks

F. Blue/Green Earth Stone

Appearance: White/green/blue

Hardness: 6½ to 7 — Characteristics: Agate material which is dyed

G. Lapis Lazuli

Appearance: A blue to violet blue stones containing calcite and pyrite crystals

Hardness: 5 to 6 — Characteristics: Pyrite (fools gold) spotted sporadically and Calcite (white) streaked

H. Turquoise

Appearance: Light to medium blue to greenish blue

Hardness: 5 to 6 — Characteristics: Often is mottled, splotted, with veins of matrix

SEMI-PRECIOUS STONE PRICING

Pricing:	Granite	Cat's Eye	Tiger Eye	Bloodstone	Hematite	Jade	Earth Stone	Lapis Lazuli	Turquoise
Large (12x10mm)									
Medium (10x8)									
Small (8x6)									
Large Cluster (8x6) 8 & 10 stone									
Large Cluster (7x5) 12 stone									
Med. Cluster (7x5) 8 & 10 stone									
Med. Cluster (5x3) 12 stone	N/A			N/A			N/A		N/A
Small Cluster (5x3) 8 stone	N/A			N/A			N/A		N/A

WARRANTY

Jostens Lifetime Warranty

Jostens has a lifetime warranty on all of its rings. That includes, but is not limited to, replacement of all stones, both genuine and synthetic, that are defective or broken, without charge. Also included in the lifetime warranty is resizing, polishing and refinishing the ring, without charge.

It is important to note that if a ring has had any repair work performed or any alterations completed by any jeweler or repair service other than Jostens, the lifetime warranty will be voided.

NOTES & QUESTIONS



CUSTOMER STONES

All customer supplied stones must be accompanied by a registered jeweler appraisal form. The form must include the following information on it:

- If the stone is a Diamond the following information must be included:
Carat Size, Cut, Color and Clarity.
- If the stone is a full stone (12 x 10, 10 x 8, 8 x 6, 7 x 5, or a 5 x 3), the measurements need to be on the appraisal form in millimeters and they need to be to the specifications that are listed below. No stones will be accepted that are not to these specifications.
- All appraisals must include a replacement price. If the stone is an heirloom stone we will need a replacement value. If the stone was purchased then we will need a copy of the sales receipt.
- All stones must be loose and free from any mounting. Stones will not be accepted if they are still in a mounting.
- Because of the extremely tight tolerances, personal stones under 10 points will not be accepted.

PAYMENT INFORMATION

If you plan on making an initial deposit or you plan on paying in full when you place your order (s) you will need to bring a *personal check* or *money order*. **Jostens will no longer be taking any credit or debit card information at the time of ordering.**

You will be given a payment due date that will be located on the front of your order form. This date is when your final payment will be due to Jostens. By complying with this date you will insure that your items will ship with your Class. You have 30 days from the time that you place your order (s) to make any changes. After the 30 days your order (s) will be

MEASUREMENTS FOR CUSTOMER SUPPLIED STONES

All customer stones must be to these exact measurements. There cannot be a variance as these stones have a stone setting edge. One exception is the depth of the stone which can be less but not more than the measurement listed.

	FULL STONES	STONE DEPTH
Men's Large Ring	12 x 10 mm oval	3.5 mm
Men's/Women's Medium ring	10 x 8 mm oval	3.0 mm
Women's small ring	8 x 6 mm oval	2.5 mm

CENTER STONE IN A CLUSTER

	NO. OF STONES	FULL STONES	STONE DEPTH
Men's Large Ring	8 & 10 stone	8 x 6 mm oval	3.0 mm
Men's Large Ring	12 stone	7 x 5 mm oval	2.5 mm
Men's/Women's Med Ring	8 & 10 stone	7 x 5 mm oval	2.5 mm
Men's/Women's Med Ring	12 stone	5 x 3 mm oval	2.0 mm
Women's Small Ring	8 stone	5 x 3 mm oval	2.0 mm

All stones will be inspected by Jostens manufacturing plant for final approval. This approval process can take up to 90 days from the time we receive your stone.

All stones must be presented along with the jeweler appraisal when you place your ring order.

Customer stones must be received within 30 days from the date you placed your ring order. If you lose your ring, your personal stone or stones are not covered under Jostens protection insurance.

Additional Charges incurred when setting a customer stone:

Stone setting charge \$

Stone set in a tube set, or a white gold top:

add \$ to the setting charge for a total charge of \$

QUESTIONS?

For questions, customer service, or Warranty information, please call our U.S. Air Force Academy customer service center at 1-800-852-9353 or e-mail: aps@jostens.com

SALES & SERVICE

Jostens College Division
Customer Service
Toll-Free 1-800-852-9353
7:00 a.m. - 5:00 p.m. CST
1900 Hartle Street
Owatonna, MN 55060
e-mail: aps@jostens.com



UNITED STATES
AIR FORCE ACADEMY



Association of Graduates
and

Jostens[®]

