



USCGA CLASS RING

Wear It With Pride!



UNITED STATES
COAST GUARD
ACADEMY

2017 & 2018 Class Ring Catalog



UNITED STATES COAST GUARD ACADEMY



**OFFICIAL RING
ORDERING INFORMATION FOR
THE CLASS OF 2017**

**MINIATURE RING
ORDERING INFORMATION FOR
THE CLASS OF 2018**

Order Dates & Times

Wednesday, 21 October, 2015 – 1000 to 1800 Hours
Thursday, 22 October, 2015 – 0900 to 1600 Hours

Location: Alumni Center



OFFICIAL RING FOR
CLASS OF 2017



OFFICIAL RING FOR
CLASS OF 2018



Basic Information

RING STYLES

METAL QUALITY

- 18K YELLOW OR WHITE GOLD
- 14K YELLOW OR WHITE GOLD
- 10K YELLOW OR WHITE GOLD
- WHITE LUSTRIUM

YOUR RING IS A VALUABLE RECOGNITION OF YOUR ACCOMPLISHMENTS, AND THEREFORE THE ACADEMY DESIGNATES 14K YELLOW GOLD IN THE OFFICIAL ACADEMY SPECIFICATIONS. 14K IS ALSO THE JEWELER'S STANDARD IN THIS COUNTRY. FOR THOSE CADETS WHO DESIRE MORE GOLD IN THEIR RING, 18K GOLD IS AVAILABLE. FOR THOSE WISHING A MORE ECONOMICAL GOLD RING, 10K GOLD IS AVAILABLE. LUSTRIUM, A NON-PRECIOUS ALLOY MADE OF NICKEL, CHROMIUM AND BERYLLIUM IS ALSO AVAILABLE.

RING FINISH

JOSTENS OFFERS EACH CADET A CHOICE OF SATIN (NATURAL), MEDIUM OR DARK ANTIQUE FINISH. SAMPLES OF AVAILABLE FINISHES WILL BE ON DISPLAY WHEN YOU PLACE YOUR ORDER.

THE SATIN FINISH (NO ANTIQUING) IS AVAILABLE FOR AN ADDITIONAL \$.



Large: official style for men

Medium: official style for women and alternate style for men

Miniature: 3rd class ring for both men and women



Satin



Medium Antique



Dark Antique



White Gold - Satin



White Gold - Black



2017 USCGA Pricing Information

STYLES AND QUALITY

THE OFFICIAL RING IS PRICED TO INCLUDE YOUR CHOICE OF BLUE ONYX, GREEN ONYX, SARDONYX OR BLACK ONYX STONE; SATIN, MEDIUM OR DARK ANTIQUE FINISH, AND ONE LINE OF ENGRAVING INSIDE. ALL OTHER STONES AND OPTIONS ARE AN ADDITION TO THE BASIC RING PRICES LISTED HERE.

CLOSED BACK RINGS

	10K	14K	18K	LUSTRIUM
LARGE	\$	\$	\$	\$
MEDIUM	\$	\$	\$	\$
MINIATURE	\$	\$	\$	\$

ADD \$ FOR WHITE OR GREEN GOLD.

CREST JEWELRY

THE ACCESSORY JEWELRY SHOWN HERE IS CRAFTED FROM THE CREST OF THE CLASS OF 2017, AND ARE AVAILABLE IN 10K AND 14K YELLOW OR WHITE GOLD WITH YOUR CHOICE OF FINISH. ACCESSORY JEWELRY IS A GREAT GIFT ANYTIME BUT IS ESPECIALLY APPROPRIATE FOR BIRTHDAY AND HOLIDAY GIFTS FOR PARENTS, FAMILY, AND SPECIAL FRIENDS. THE PENDANT COMES WITH A GOLD PLATED PRESENTATION CHAIN.

	10K	14K
CREST PIN	\$	\$
PENDANT W/CHAIN	\$	\$
CHARM	\$	\$
TIE TACK	\$	\$
TIE BAR	\$	\$
CUFF LINKS	\$	\$

NATURAL (SATIN) FINISH, ADD \$
WHITE GOLD, ADD \$



SPECIAL COAST GUARD PACKAGE PROGRAM

ANY MEMBER OF THE CLASS OF 2017 WHO ORDERS A GOLD RING MAY ALSO ORDER A NON-GOLD (LUSTRIUM) "COMBAT RING" FOR ONLY \$.

THIS RING COMES WITH TRADITIONAL DARK ANTIQUING AND THE STANDARD PALM SIDE, ONE LINE OF ENGRAVING AND ANY SMOOTH OR FACET SYNTHETIC STONE OR A BLACK ONYX, BLUE ONYX, GREEN ONYX OR SARDONYX STONE.



USCGA RING — CLUSTER SETTING OPTIONS

CLUSTER SETTINGS

Jostens can upgrade your official ring with a variety of cluster settings. The following prices are applicable during the class ring ordering period. All diamonds listed are IK-11 (JG-03) quality and all Star Sapphires are synthetic. Prices listed are for stone clusters only and must be added to base ring price.



LARGE RING CLUSTER SETTINGS

CLUSTER 8-4 PT STONES (CENTER STONE 8 X 6 OVAL)

CENTER STONE	8-4 PT STONES	PRICE
Birthstone	Diamonds	\$
Birthstone	Cubic Zirconias	\$
Star Sapphire	Diamonds	\$
Star Sapphire	Cubic Zirconias	\$
Cubic Zirconia	Birthstones	\$
Cubic Zirconia	Cubic Zirconias	\$



CLUSTER 10-4 PT STONES (CENTER STONE 8 X 6 OVAL)

CENTER STONE	10-4 PT STONES	PRICE
Birthstone	Diamonds	\$
Birthstone	Cubic Zirconias	\$
Star Sapphire	Diamonds	\$
Star Sapphire	Cubic Zirconias	\$
Cubic Zirconia	Birthstones	\$
Cubic Zirconia	Cubic Zirconias	\$



CLUSTER 12-3 PT STONES (CENTER STONE 7 X 5 OVAL)

CENTER STONE	12-3 PT STONES	PRICE
Birthstone	Diamonds	\$
Birthstone	Cubic Zirconias	\$
Star Sapphire	Diamonds	\$
Star Sapphire	Cubic Zirconias	\$
Cubic Zirconia	Birthstones	\$
Cubic Zirconia	Cubic Zirconias	\$



MEDIUM RING CLUSTER SETTINGS

CLUSTER 8-2 PT STONES (CENTER STONE 7 X 5 OVAL)

CENTER STONE	8-2 PT STONES	PRICE
Birthstone	Diamonds	\$
Birthstone	Cubic Zirconias	\$
Star Sapphire	Diamonds	\$
Star Sapphire	Cubic Zirconias	\$
Cubic Zirconia	Birthstones	\$
Cubic Zirconia	Cubic Zirconias	\$



CLUSTER 10-1.5 PT STONES (CENTER STONE 7 X 5 OVAL)

CENTER STONE	10-1.5 PT STONES	PRICE
Birthstone	Diamonds	\$
Birthstone	Cubic Zirconias	\$
Star Sapphire	Diamonds	\$
Star Sapphire	Cubic Zirconias	\$
Cubic Zirconia	Birthstones	\$
Cubic Zirconia	Cubic Zirconias	\$



CLUSTER 12-2PT STONES (CENTER STONE 5 X 3 OVAL)

CENTER STONE	12-2 PT STONES	PRICE
Birthstone	Diamonds	\$
Birthstone	Cubic Zirconias	\$
Star Sapphire	Diamonds	\$
Star Sapphire	Cubic Zirconias	\$
Cubic Zirconia	Birthstones	\$
Cubic Zirconia	Cubic Zirconias	\$



SMALL AND MINIATURE RING CLUSTER SETTINGS

CLUSTER 8-1PT STONES (CENTER STONE 5 X 3 OVAL)

CENTER STONE	8-1 PT STONES	PRICE
Birthstone	Diamonds	\$
Birthstone	Cubic Zirconias	\$
Star Sapphire	Diamonds	\$
Star Sapphire	Cubic Zirconias	\$
Cubic Zirconia	Birthstones	\$
Cubic Zirconia	Cubic Zirconias	\$





RING SETTINGS & STONE OPTIONS

TUBE SETS

A DIAMOND OR GENUINE STONE CAN BE ADDED TO YOUR SMOOTH TOP BIRTHSTONE BY PREPARING THE STONE TO RECEIVE A SQUARE TUBE SET. ACTUAL SAMPLES WILL BE ON DISPLAY WHEN YOU ORDER YOUR RING.



MAXIMUM SIZES OF STONES THAT CAN BE TUBE SET INTO BIRTHSTONES ARE AS FOLLOWS:

	SQUARE
LARGE RING	1/2 CARAT
MEDIUM RING	1/7 CARAT
MINIATURE RING	1/20 CARAT

TUBE SET: GOLD TOP STONE PRICING

THESE BEAUTIFUL AND ELEGANT GOLD TOPS ARE AVAILABLE IN A VARIETY OF DESIGNS. THE TOPS CAN BE SET WITH A SOLITAIRE DIAMOND OR GENUINE STONE TO ENHANCE THE BEAUTY OF YOUR RING. ASK ABOUT THE POSSIBILITIES WHEN YOU ORDER YOUR RING.



MAXIMUM SIZES OF STONES THAT CAN BE SET IN THE GOLD TOPS ARE AS FOLLOWS:

	LAUREL	ECLIPSE	ROSETTE	GOLDSTONE	STAR
LARGE RING	3/4 carat	1/2 carat	1/3 carat	1 carat	3/4 carat
MEDIUM RING	1/4 carat	1/4 carat	1/4 carat	3/4 carat	1/4 carat
MINIATURE RING	1/10 carat	1/10 carat	1/10 carat	1/3 carat	1/5 carat

TUBE SET & GOLD TOP STONE PRICING

Ct. Size	STONES				Ct. Size	STONES			
	Diamond (JG-01)	Diamond (JG-03)	Genuine Ruby	Genuine Emerald		Genuine Blue Sapphire	Cubic Zirconia	Birth Stones	Cornflower Blue Star Sapphire
1	\$	\$	\$	\$	1	\$	\$	\$	—
3/4	\$	\$	\$	\$	3/4	\$	\$	\$	—
1/2	\$	\$	\$	\$	1/2	\$	\$	\$	—
1/3	\$	\$	\$	\$	1/3	\$	\$	\$	—
1/4	\$	\$	\$	\$	1/4	\$	\$	\$	\$
1/5	\$	\$	\$	\$	1/5	\$	\$	\$	—
1/7	\$	\$	\$	\$	1/7	\$	\$	\$	—
1/10	\$	\$	\$	\$	1/10	\$	\$	\$	—
1/20	\$	\$	\$	\$	1/20	\$	\$	\$	—



USCGA RING — ADDITIONAL OPTIONS

ADDITIONAL RING OPTIONS

GENUINE STONE BEZEL DIVIDERS

TO ENHANCE THE BEAUTY OF YOUR STONE, CLUSTER TOP OR WHITE GOLD TOP, WE OFFER THE OPTION OF SETTING DIAMONDS OR GENUINE STONES IN YOUR RING BEZEL. ONLY FULL-CUT GENUINE STONES ARE USED. SAMPLES WILL BE ON DISPLAY WHEN YOU PLACE YOUR RING ORDER. THE COST FOR THIS OPTION IS:

STYLE	STONE PTS	DIAMONDS	SAPPHIRES	RUBIES	EMERALDS	SYNTHETIC BIRTHSTONES OR CUBIC ZIRCONIAS	GENUINE RUNNING LIGHTS*
LARGE	2-3 PTS	\$	\$	\$	\$	\$	\$
MEDIUM	2-2 PTS	\$	\$	\$	\$	\$	\$
MINIATURE	2-1 PTS	\$	\$	\$	\$	\$	\$

*GENUINE RUNNING LIGHTS: 1 EMERALD, 1 RUBY



Stone Dividers



Ship Wheel Dividers

PAVE TOPS

THE NEW JOSTENS PAVE “WATERFALL” TOP, WHERE GOLD TOPS MEET CLUSTER TOPS. A GOLD TOP SET WITH UP TO 80 DIAMONDS OR CUBIC ZIRCONIA’S THAT SURROUND A CENTER STONE ON TOP. CHOOSE FROM OUR LARGE SELECTION OF GEMSTONES OR SYNTHETIC STONES TO TOP OFF YOUR PAVE SETTING.

PAVE TOP FOR LARGE RINGS

1/5 CT CENTER STONE SURROUNDED BY 80 – 1/2 PT. STONES

CENTER STONE	SURROUNDED BY:	PRICE
SYNTHETIC STONE	DIAMONDS	\$
CUBIC ZIRCONIA	CUBIC ZIRCONIAS	\$
SYNTHETIC STONE	CUBIC ZIRCONIAS	\$



NOTE: GENUINE STONES ARE ALSO AVAILABLE IN THE CENTER OF THE PAVE TOP. PLEASE ASK ONE OF THE JOSTENS REPRESENTATIVES FOR PRICING.

PAVE TOP FOR MEDIUM RINGS

1/7 CT CENTER STONE SURROUNDED BY 52 – 1/2 PT. STONES

CENTER STONE	SURROUNDED BY:	PRICE
SYNTHETIC STONE	DIAMONDS	\$
CUBIC ZIRCONIA	CUBIC ZIRCONIAS	\$
SYNTHETIC STONE	CUBIC ZIRCONIAS	\$



PAVE TOP FOR SMALL RINGS

1/10 CT CENTER STONE SURROUNDED BY 32 – 1/2 PT. STONES

CENTER STONE	SURROUNDED BY:	PRICE
SYNTHETIC STONE	DIAMONDS	\$
CUBIC ZIRCONIA	CUBIC ZIRCONIAS	\$
SYNTHETIC STONE	CUBIC ZIRCONIAS	\$



SCULPTURED PALMSIDE

WITH THIS ELEGANT TOUCH OF EXTRA CRAFTSMANSHIP, A TEXTURED PATTERN IS ADDED BY HAND TO THE PALMSIDE OF YOUR RING. IN ADDITION TO ENHANCING THE CUSTOM BEAUTY OF YOUR RING, THIS FEATURE WILL CAMOUFLAGUE NICKS AND SCRATCHES THAT RESULT FROM NORMAL WEAR AND WILL HELP TO RETAIN THE PALMSIDE BEAUTY OF YOUR RING. THE ADDITIONAL COST FOR A SCULPTURED PALMSIDE IS \$.



Sculptured



Standard

ENGRAVING

THE AMOUNT OF ENGRAVING IN YOUR RING IS LIMITED BY THE SPACE AVAILABLE. YOUR RING MAY HAVE UP TO 3 LINES OF ENGRAVING. EACH LINE CAN HAVE UP TO 34 CHARACTERS INCLUDING SPACES. THE MORE CHARACTERS THAT YOU HAVE IN YOUR ENGRAVING THE SMALLER THE ENGRAVING WILL BE INSIDE YOUR RING.

- FIRST LINE OF ENGRAVING IS FREE.
- A SECOND AND THIRD LINE OF ENGRAVING IS TYPICALLY USED TO INCLUDE A MOTTO OR PHRASE TO FURTHER PERSONALIZE YOUR RING. THERE IS AN ADDITIONAL CHARGE OF \$ FOR EACH ADDITIONAL LINE. ENGRAVING IS AVAILABLE IN SCRIPT OR BLOCK LETTERS.



Script

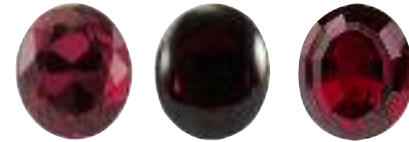


Block



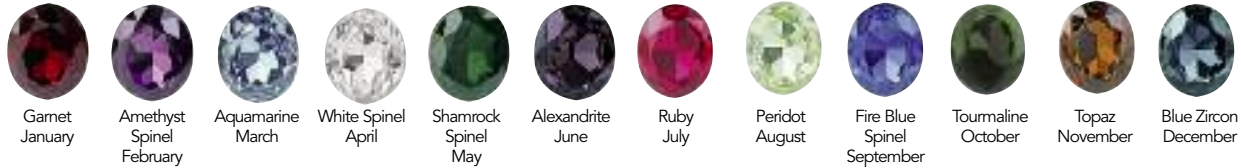
STONE OPTIONS

The standard official ring includes your choice of a smooth black onyx, blue onyx, green onyx, or sardonyx stone.

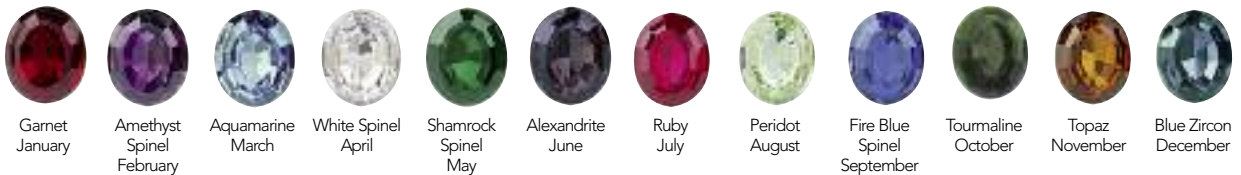


FACET **SMOOTH** **INDIA**

BIRTHSTONES Smooth and faceted birthstones. Jostens simulated birthstones are "ideal cut" to maximize the dazzle and brilliance of the stone. As light enters the stone, it freely refracts from facet to facet, for a radiant display of color.



INDIA CUT India-cut stones offer 40% more hand-cut facets than standard facet stones, to bring out their true color and brightness.



SUNBURST Add extra brilliance to your stone with this special feature on the back of the simulated birthstone of your choice. Smooth or Facet top available.



ALSO AVAILABLE:

DARK BLUE SPINEL



Facet Smooth Facet Sunburst Smooth Sunburst India

ABOUT SYNTHETIC BIRTHSTONES

These are man-made stones with the same molecular structure and properties as a genuine stone. They have a hardness factor on the Mohs scale of 7 or 8. Using this same scale, window glass is a 3 and a diamond is a 10.

Actual stones and options will be on display when you order your ring.

SYNTHETIC STAR SAPPHIRE



Claret Red Cornflower Blue

Next to the diamond this distinctive stone is the hardest and most chip resistant. The star sapphire displays a clear, sharp polaris.

The additional charges for these synthetic stones are:

- Large** \$
- Medium** \$
- Small** \$



USCGA RING — EXCLUSIVE GEMSTONES

Amethyst

Light, Medium, & Dark purple

Hardness: 7

Appearance: Transparent light pinkish purple to a dark reddish or bluish purple

Characteristics: Color zoning, fingerprints, and crystals. Amethyst, with its rich purple color, symbolizes royalty and aristocracy. Since it is plentiful in nature, it represents an incredible value for those who appreciate its elegant color.



Amethyst Pricing: Light Medium Dark

Large (12x10mm)
Medium (10x8)
Small (8x6)
Large Cluster (8x6) 8 & 10 stone
Large Cluster (7x5) 12 stone
Med. Cluster (7x5) 8 & 10 stone
Med. Cluster (5x3) 12 stone
Small Cluster (5x3) 8 stone

Aquamarine: Light, Medium & Dark

Hardness: 7½-8

Appearance: Light to medium blue to bluish-green

Characteristics: Liquid-filled inclusions, fingerprints, hollow or gas filled tubes

Aquamarine has long symbolized the sea. It remains the favorite of those who appreciate the rarity of this spectacular blue gemstone.



Aquamarine Pricing: Light Medium Dark

Large (12x10mm)
Medium (10x8)
Small (8x6)
Large Cluster (8x6) 8 & 10 stone
Large Cluster (7x5) 12 stone
Med. Cluster (7x5) 8 & 10 stone
Med. Cluster (5x3) 12 stone
Small Cluster (5x3) 8 stone

Garnet

Light, Medium, and Dark

Hardness: 7 to 7½

Appearance: Light to dark reddish orange to purplish red

Characteristics: Coarse needle-like inclusion, included crystal of low relief

Garnet is available in a stunning array of colors and price ranges to fit anyone's taste.



Garnet Pricing: Far East Garnet Dark Mozambique Medium Rhodalite Light

Large (12x10mm)
Medium (10x8)
Small (8x6)
Large Cluster (8x6) 8 & 10 stone
Large Cluster (7x5) 12 stone
Med. Cluster (7x5) 8 & 10 stone
Med. Cluster (5x3) 12 stone
Small Cluster (5x3) 8 stone

Blue Topaz

Light (Sky), Medium (Swiss), and Dark

Hardness: 8

Appearance: Transparent light to medium blue

Characteristics: 2-phase and 3-phase inclusions.

This popular blue gem symbolizes both the sky and sea. It is an affordable, fashionable stone, sure to please any taste.



Blue Topaz Pricing: Light Medium Dark

Large (12x10mm)
Medium (10x8)
Small (8x6)
Large Cluster (8x6) 8 & 10 stone
Large Cluster (7x5) 12 stone
Med. Cluster (7x5) 8 & 10 stone
Med. Cluster (5x3) 12 stone
Small Cluster (5x3) 8 stone

Genuine Black Star Sapphire

Hardness: 9

Appearance: Light to dark green/greyish black with asterism, hexagonal lines

Characteristics: Fine needles-like rutile "silk", hexagonal growth lines, internal fractures, color zoning, small "fissures" and scratches around the side of the stone

A popular choice at the academy, these dark six-rayed stars are symbolic of the Polaris, or Guiding Light.



Genuine Black Star Sapphire Pricing:

Large (12x10)	Medium (10x8)	Small (8x6)	Large Cluster (8x6) 8 & 10 stone	Large Cluster (7x5) 12 stone	Med. Cluster (7x5) 8 & 10 stone	Med. Cluster (5x3) 12 stone	Small Cluster (5x3) 8 stone

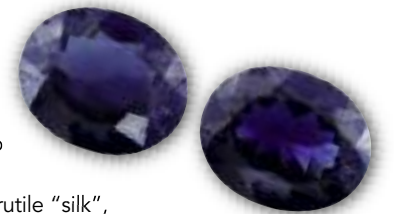
Genuine Blue Sapphire

Hardness: 9

Appearance: Light to dark violet to greenish blue

Characteristics: Fine needles-like rutile "silk", fingerprint inclusions, hexagonal growth lines, and color zones.

Sapphire is a regal gem and was worn by kings as a powerful defense from harm. This favorite dark blue hue combined with the durability of sapphire makes a gemstone that will endure for generations to come.



Blue Sapphire Pricing:

Large (12x10mm)
Medium (10x8)
Small (8x6)
Large Cluster (8x6) 8 & 10 stone
Large Cluster (7x5) 12 stone
Med. Cluster (7x5) 8 & 10 stone
Med. Cluster (5x3) 12 stone
Small Cluster (5x3) 8 stone



Peridot

Hardness: 6½

Appearance: Light to dark yellowish to brownish green

Characteristics: Disk-like liquid and gas inclusions, "lily pads", dark crystals

Peridot's golden green color represents the sun and has been prized for thousand of years.



Peridot Pricing:

Large (12x10)	Medium (10x8)	Small (8x6)	Large Cluster (8x6)	Large Cluster (7x5)	Med. Cluster (7x5)	Med. Cluster (5x3)	Small Cluster (5x3)
			8&10 stone	12 stone	8&10 stone	12 stone	8 stone

Emerald

Hardness: 7½ to 8

Appearance: Light to very dark green to bluish green

Characteristics: Almost always found with inclusions, such as calcite, pyrite and or mica

Emeralds have been the most treasured green gemstone for centuries. Rare and expensive, emeralds are available only in smaller sizes in academy class rings.



Emerald Pricing:

Large (12x10)	Medium (10x8)	Small (8x6)	Large Cluster (8x6)	Large Cluster (7x5)	Med. Cluster (7x5)	Med. Cluster (5x3)	Small Cluster (5x3)
N/A	N/A		8&10 stone	12 stone	8&10 stone	12 stone	8 stone

Genuine Ruby

Hardness: 9

Appearance: Light to dark orange to purplish red

Characteristics: Fine needle-like rutile "silk", fingerprint inclusions, and color zones.

Ruby has always been the pinnacle of the gemstone family. Rare, sought after, and vibrant, it is desired like no other gemstone.



Ruby Pricing:

Large (12x10)	Medium (10x8)	Small (8x6)	Large Cluster (8x6)	Large Cluster (7x5)	Med. Cluster (7x5)	Med. Cluster (5x3)	Small Cluster (5x3)
N/A	N/A		8&10 stone	12 stone	8&10 stone	12 stone	8 stone

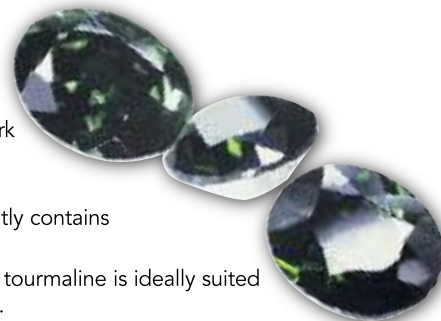
Green Tourmaline

Hardness: 7 to 7½

Appearance: Light to dark yellowish green to bluish green

Characteristics: Frequently contains thread-like inclusions

Available and affordable, tourmaline is ideally suited to virtually anyone's taste.



Green Tourmaline Pricing:

Large (12x10)	Medium (10x8)	Small (8x6)	Large Cluster (8x6)	Large Cluster (7x5)	Med. Cluster (7x5)	Med. Cluster (5x3)	Small Cluster (5x3)
			8&10 stone	12 stone	8&10 stone	12 stone	8 stone

Citrine Topaz

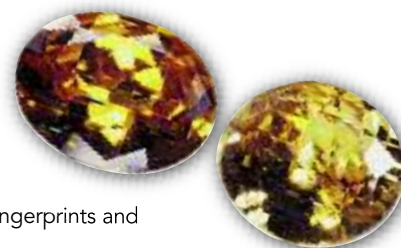
Light, and Dark

Hardness: 7

Appearance: Light yellow to golden brown

Characteristics: Color zoning, fingerprints and crystals

The yellow hues of citrine are striking and symbolic of the sun, health and vitality. Since it is plentiful in nature, it is an incredible value for the person who appreciates its color.



Citrine Topaz Pricing: Light Dark

Large (12x10mm)	
Medium (10x8)	
Small (8x6)	
Large Cluster (8x6)	8 & 10 stone
Large Cluster (7x5)	12 stone
Med. Cluster (7x5)	8 & 10 stone
Med. Cluster (5x3)	12 stone
Small Cluster (5x3)	8 stone

Opal

White

Hardness: 5 to 6½

Appearance: Transparent to opaque stones with "play of color"

Mysterious opals contain the wonders of the skies—sparkling rainbows, fireworks and lightning—shifting and moving in their depths.



Opal Pricing:

Large (12x10)	Medium (10x8)	Small (8x6)	Large Cluster (8x6)	Large Cluster (7x5)	Med. Cluster (7x5)	Med. Cluster (5x3)	Small Cluster (5x3)
			8&10 stone	12 stone	8&10 stone	12 stone	8 stone



USCGA RING — EXCLUSIVE GEMSTONES

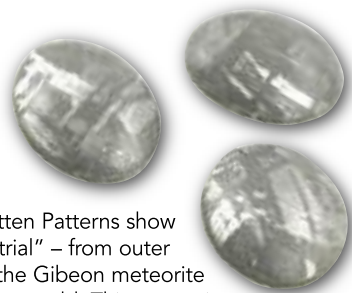
Meteorite

Iron w/ Widmanstatten Patterns

Hardness: 9

Appearance: Varies from stone to stone

Characteristics: The Widmanstatten Patterns show us that this stone is "Extra Terrestrial" – from outer space. These stones come from the Gibeon meteorite that is estimated to be 4 billion years old. This meteorite fell to earth over 10,000 years ago in Africa. It is made up of 91.8% Iron and 7.7% Nickel and also contains small amounts of Cobalt, Phosphorus, Iridium, Gallium, and Germanium. Polished with a dilute nitric acid to bring out the Widmanstatten Patterns that are unique in each meteorite.



Meteorite Pricing:

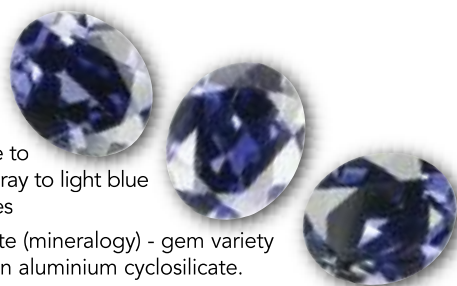
Large (12x10)	Medium (10x8)	Small (8x6)	Large Cluster (8x6)	Large Cluster (7x5)	Med. Cluster (7x5)	Med. Cluster (5x3)	Small Cluster (5x3)
			8&10 stone	12 stone	8&10 stone	12 stone	8 stone
						NA	NA

Iolite

Hardness: 7 - 7.5

Appearance: Color varies from sapphire blue to blue violet to yellowish gray to light blue as the light angle changes

Characteristics: Cordierite (mineralogy) - gem variety Iolite is a magnesium iron aluminium cyclosilicate.



The name Iolite comes from the Greek word for violet. It has also been called "water-sapphire" and "vikings' compass", because of its reputed ability to determine the direction of the sun on overcast days

Iolite Pricing:

Large (12x10)	Medium (10x8)	Small (8x6)	Large Cluster (8x6)	Large Cluster (7x5)	Med. Cluster (7x5)	Med. Cluster (5x3)	Small Cluster (5x3)
			8&10 stone	12 stone	8&10 stone	12 stone	8 stone

DIAMONDS



COLOR

The most desirable diamonds are colorless. A totally colorless diamond allows light to pass through it and be dispersed as rainbows of color.

D	E	F	G	H	I	J	K	L	M	N	O	P	Q	R	S	T	U	V	W	X	Y	Z
COLORLESS			NEAR COLORLESS			FAINT			VERY LIGHT YELLOW			LIGHT YELLOW										

Pink Tourmaline

Hardness: 7 - 7.5

Appearance: Light to Dark Pink

Characteristics: Frequently contains thread-like inclusions.

Available and affordable, tourmaline is ideally suited to virtually anyone's taste.



Pink Tourmaline Pricing:

Large (12x10)	Medium (10x8)	Small (8x6)	Large Cluster (8x6)	Large Cluster (7x5)	Med. Cluster (7x5)	Med. Cluster (5x3)	Small Cluster (5x3)
			8&10 stone	12 stone	8&10 stone	12 stone	8 stone

Green Quartz

Light Green

Hardness: 7

Appearance: Light "Smokey" Green

Characteristics: Green quartz (Prasiolite) is a rare Brazilian stone that has similar characteristics to Amethyst and Citrine. It is often incorrectly referred to as green amethyst.



Green Quartz Pricing:

Large (12x10)	Medium (10x8)	Small (8x6)	Large Cluster (8x6)	Large Cluster (7x5)	Med. Cluster (7x5)	Med. Cluster (5x3)	Small Cluster (5x3)
			8&10 stone	12 stone	8&10 stone	12 stone	8 stone

Tanzanite

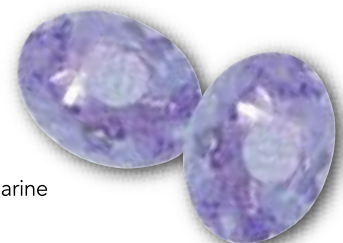
Blue violet

Hardness: 6½ to 7

Appearance: Light violet

Characteristics: Multifaceted prisms

Named for the East African state of Tanzania, the color varies from ultramarine to sapphire blue and appears violet.



Tanzanite Pricing:

Large (12x10)	Medium (10x8)	Small (8x6)	Large Cluster (8x6)	Large Cluster (7x5)	Med. Cluster (7x5)	Med. Cluster (5x3)	Small Cluster (5x3)
			8&10 stone	12 stone	8&10 stone	12 stone	8 stone

Diamond Quality

JG 01 Grade	Color	White H-I
	Clarity	VS 2 GIA Classification
		No black inclusions
		No chips or feathers open to surface
		No polish lines
		Clear - no watery, grainy material
	Proportion	Very good or better
		No fisheyes or dark centers
JG 03 Grade	Color	White IK
	Clarity	SI GIA Classification
		No black inclusions
		No chips or feathers open to surface
		Only very minor polish lines
		Clear - no watery, grainy material
	Proportion	Good or better
		No fisheyes or dark centers

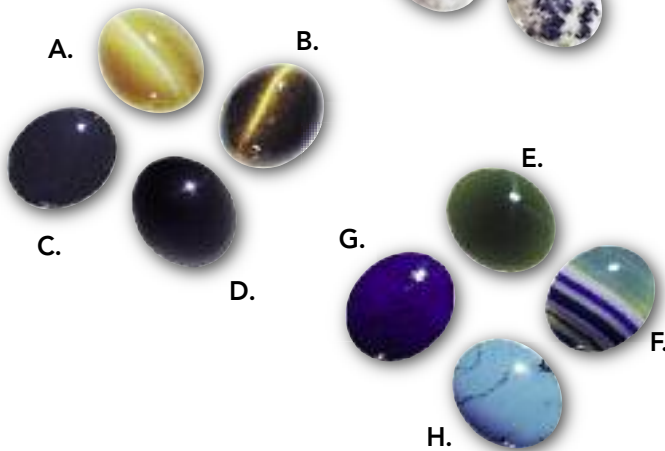


SEMI-PRECIOUS STONES

Granite

Hardness: 5½

Jostens has cut and polished granite, provided by the Academy, into stones for your class ring.



A. Cats Eye Hardness: 7 — Appearance: A stone with fibrous structure. Characteristics: Irregular fibrous structure

B. Brown Tiger Eye Hardness: 7 — Appearance: A stone with fibrous structure. Characteristics: Irregular fibrous structure

C. Bloodstone Hardness: 6½ to 7 — Appearance: Dark green with red to brown spots Characteristics: Semi-transparent to opaque

D. Hematite Hardness: 6½ — Appearance: Silver black with metallic luster Characteristics: Semi-transparent to opaque

E. Jade Hardness: 6 to 6½ — Appearance: Translucent to opaque Characteristics: Dark inclusions and streaks

F. Blue/Green Earth Stone Hardness: 6½ to 7 — Appearance: White/green/blue Characteristics: Agate material which is dyed

G. Lapis Lazuli Hardness: 5 to 6 — Appearance: A blue to violet blue stone containing calcite and pyrite crystals Characteristics: Pyrite (fools gold) spotted sporadically and Calcite (white) streaked

H. Turquoise Hardness: 5 to 6 — Appearance: Light to medium blue to greenish blue Characteristics: Often is mottled, splotched, with veins of matrix

SEMI-PRECIOUS STONE PRICING

Pricing:	Granite	Cat's Eye	Tiger Eye	Bloodstone	Hematite	Jade	Earth Stone	Lapis Lazuli	Turquoise
Large (12x10mm)									
Medium (10x8)									
Small (8x6)									
Large Cluster (8x6) 8 & 10 stone									
Large Cluster (7x5) 12 stone									
Med. Cluster (7x5) 8 & 10 stone									
Med. Cluster (5x3) 12 stone	N/A			N/A			N/A		N/A
Small Cluster (5x3) 8 stone	N/A			N/A			N/A		N/A

JUMBO REPLICARING/PAPERWEIGHT

No desk is completed without this enlarged replica of the Coast Guard Academy 2017 class ring. One side of the ring depicts the USCGA crest while the other side proudly displays the USCGA 2017 class crest. The top of the ring shows a classic sailing vessel with United States Coast Guard Academy spelled out around the bezel. Approximate size is 2" x 2 ½" .

The cost is \$ and includes the jumbo ring and walnut stand.





STONES AND CUTS

IN PLACE OF THE STONES INCLUDED IN THE BASIC RING, YOU MAY SELECT AN OPTIONAL STONE. REFER TO THE STONE OPTIONS CHART. THE STONE CHOICES AND ADDITIONAL CHARGES ARE:

	LARGE RING	MEDIUM RING	MINIATURE RING
SYNTHETIC BIRTHSTONE (SMOOTH OR FACET)	\$	\$	\$
SYNTHETIC STAR SAPPHIRE	\$	\$	\$
SUNBURST BIRTHSTONE	\$	\$	\$
INDIA CUT BIRTHSTONE	\$	\$	\$

RING SIZING

TO PROPERLY SIZE YOUR FINGER, A RING SIZER SHOULD FIT SNUGLY OVER THE KNUCKLE OF THE FINGER ON WHICH YOU WILL WEAR YOUR RING. THE RING IS NORMALLY WORN ON THE RING FINGER OF EITHER HAND. ALSO, BE AWARE THAT YOUR LEFT AND RIGHT HAND CAN VARY IN RING SIZE. FULL AND HALF SIZES ARE AVAILABLE. A JOSTENS REPRESENTATIVE WILL BE AVAILABLE TO ASSIST YOU AT THE TIME YOU PLACE YOUR ORDER.

GENUINE STONES

JOSTENS WILL HAVE A WIDE SELECTION OF GENUINE STONES ON HAND AT ORDERING TIME FOR EACH INDIVIDUAL CADET TO SELECT FROM. WE HAVE OBTAINED STONES FROM OUR OWN LAPIDARY IN GERMANY AS WELL AS OTHER SOURCES IN NEW YORK, EUROPE AND THE FAR EAST. ALL OF THESE STONES HAVE BEEN CUT TO THE EXACTING SPECIFICATIONS OF YOUR RING. JOSTENS GUARANTEES EACH GENUINE STONE PURCHASED FROM US AGAINST BREAKAGE PRIOR TO GRADUATION FROM THE ACADEMY. IF YOUR RING SHOULD REQUIRE REPAIR IN THE FUTURE, RETURN IT TO JOSTENS. ANY WORK DONE ON YOUR RING OUTSIDE THE JOSTENS FACILITIES WILL CANCEL ALL WARRANTIES. JOSTENS DOES NOT ACCEPT RESPONSIBILITY FOR ANY GENUINE STONES NOT PURCHASED FROM US.

GENUINE STONES AND CURRENT MARKET PRICES ARE PROVIDED FOR YOUR INFORMATION. EACH STONE WILL BE INDIVIDUALLY PRICED FOR YOU TO SELECT AT THE TIME YOUR RING IS ORDERED.

WARRANTY

JOSTENS LIFETIME WARRANTY

JOSTENS HAS A LIFETIME WARRANTY ON ALL OF ITS RINGS. THAT INCLUDES, BUT IS NOT LIMITED TO, REPLACEMENT OF ALL STONES, BOTH GENUINE AND SYNTHETIC, THAT ARE DEFECTIVE OR BROKEN, WITHOUT CHARGE. ALSO INCLUDED IN THE LIFETIME WARRANTY IS RESIZING, POLISHING AND REFINISHING THE RING, WITHOUT CHARGE.

It is important to note that if a ring has had any repair work performed or any alterations completed by any jeweler or repair service other than Jostens, the lifetime warranty will be voided.

PAYMENT INFORMATION

IF YOU PLAN ON MAKING AN INITIAL DEPOSIT OR YOU PLAN ON PAYING IN FULL WHEN YOU PLACE YOUR ORDER (S) YOU WILL NEED TO BRING A PERSONAL CHECK OR MONEY ORDER. JOSTENS WILL NO LONGER BE TAKING ANY CREDIT OR DEBIT CARD INFORMATION AT THE TIME OF ORDERING.

YOU WILL BE GIVEN A PAYMENT DUE DATE THAT WILL BE LOCATED ON THE FRONT OF YOUR ORDER FORM. THIS DATE IS WHEN YOUR FINAL PAYMENT WILL BE DUE TO JOSTENS. BY COMPLYING WITH THIS DATE YOU WILL INSURE THAT YOUR ITEMS WILL SHIP WITH YOUR CLASS. YOU HAVE 30 DAYS FROM THE TIME THAT YOU PLACE YOUR ORDER (S) TO MAKE ANY CHANGES. AFTER THE 30 DAYS YOUR ORDER (S) WILL BE ENTERED INTO PRODUCTION IN WHICH TIME YOU WILL NO LONGER BE ABLE TO MAKE ANY CHANGES.

YOU WILL NEED TO ALLOW (5) WEEKS FROM THE TIME YOU PLACE YOUR ORDER (S), AFTER THE (5) WEEKS YOU WILL THEN BE ABLE TO LOG ONTO: JOSTENS.COM/PAYMENTS TO SET UP YOUR PERSONAL ACCOUNT AND BEGIN MAKING PAYMENTS. ONCE YOU HAVE SET UP THIS INFORMATION YOU WILL BEGIN RECEIVING E-MAIL NOTICES UNTIL YOUR ACCOUNT IS PAID IN FULL.

SALES & SERVICE

USCGA CUSTOMER SERVICE CENTER
TOLL-FREE 1-800-603-0925
7:00 A.M. – 5:00 P.M. CENTRAL TIME

1900 HARTLE AVENUE
OWATONNA, MN 55060
WWW.JOSTENS.COM/USCGA
EMAIL: APS@JOSTENS.COM



CUSTOMER STONES

ALL CUSTOMER SUPPLIED STONES MUST BE ACCOMPANIED BY A REGISTERED JEWELERS APPRAISAL FORM. THE FORM MUST INCLUDE THE FOLLOWING INFORMATION ON IT:

- IF THE STONE IS A DIAMOND THE FOLLOWING INFORMATION MUST BE INCLUDED: **CARAT SIZE, CUT, COLOR AND CLARITY.**
- IF THE STONE IS A FULL STONE (12 X 10, 10 X 8, 8 X 6, 7 X 5, OR A 5 X 3), THE MEASUREMENTS NEED TO BE ON THE APPRAISAL FORM IN MILLIMETERS AND THEY NEED TO BE TO THE SPECIFICATIONS THAT ARE LISTED BELOW. **NO STONES WILL BE ACCEPTED THAT ARE NOT TO THESE SPECIFICATIONS.**
- ALL APPRAISALS MUST INCLUDE A REPLACEMENT PRICE. IF THE STONE IS AN HEIRLOOM STONE WE WILL NEED A REPLACEMENT VALUE. IF THE STONE WAS PURCHASED THEN WE WILL NEED A COPY OF THE SALES RECEIPT.
- ALL STONES MUST BE LOOSE AND FREE FROM ANY MOUNTING. STONES WILL NOT BE ACCEPTED IF THEY ARE STILL IN A MOUNTING.
- BECAUSE OF THE EXTREMELY TIGHT TOLERANCES, PERSONAL STONES UNDER 10 POINTS WILL NOT BE ACCEPTED.

MEASUREMENTS FOR CUSTOMER SUPPLIED STONES

ALL CUSTOMER STONES MUST BE TO THESE EXACT MEASUREMENTS. THERE CANNOT BE A VARIANCE AS THESE STONES HAVE A STONE SETTING EDGE. ONE EXCEPTION IS THE DEPTH OF THE STONE WHICH CAN BE LESS BUT NOT MORE THAN THE MEASUREMENT LISTED.

FULL STONES

	DEPTH OF THE STONE
MEN'S LARGE RING	12 X 10 MM OVAL 3.5 MM
MEN'S/WOMEN'S MED. RING	10 X 8 MM OVAL 3.0 MM
WOMEN'S SMALL RING	8 X 6 MM OVAL 2.5 MM

CENTER STONE IN A CLUSTER

MEN'S LARGE RING	8 & 10 STONE	8 X 6 MM OVAL	3.0 MM
MEN'S LARGE RING	12 STONE	7 X 5 MM OVAL	2.5 MM
MEN'S/WOMEN'S MED. RING	8 & 10 STONE	7 X 5 MM OVAL	2.5 MM
MEN'S/WOMEN'S MED. RING	12 STONE	5 X 3 MM OVAL	2.0 MM
WOMEN'S SMALL RING		5 X 3 MM OVAL	2.0 MM

MEASUREMENTS FOR CUSTOMER SUPPLIED STONES

ALL CUSTOMER STONES MUST BE TO THESE EXACT MEASUREMENTS. THERE CANNOT BE A VARIANCE AS THESE STONES HAVE A STONE SETTING EDGE. ONE EXCEPTION IS THE DEPTH OF THE STONE WHICH CAN BE LESS BUT NOT MORE THAN THE MEASUREMENT LISTED.

ALL STONES WILL BE INSPECTED BY JOSTENS MANUFACTURING PLANT FOR FINAL APPROVAL. THIS APPROVAL PROCESS CAN TAKE UP TO 90 DAYS FROM THE TIME WE RECEIVE YOUR STONE.

ALL STONES MUST BE PRESENTED ALONG WITH THE JEWELERS APPRAISAL WHEN YOU PLACE YOUR RING ORDER.

CUSTOMER STONES MUST BE RECEIVED WITHIN 30 DAYS FROM THE DATE YOU PLACED YOUR RING ORDER.

IF YOU LOSE YOUR RING, YOUR PERSONAL STONE OR STONES ARE NOT COVERED UNDER JOSTENS PROTECTION INSURANCE.

ADDITIONAL CHARGES INCURRED WHEN SETTING A CUSTOMER STONE:

STONE SETTING CHARGE \$

STONE SET IN A TUBE SET, OR A WHITE GOLD TOP:

ADD \$ TO THE SETTING CHARGE FOR A TOTAL CHARGE OF \$



UNITED STATES COAST GUARD ACADEMY



© 2015 JOSTENS, Inc.